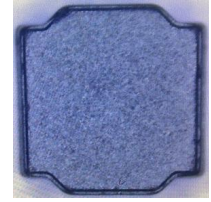


SMD Wire Wound Power Inductor

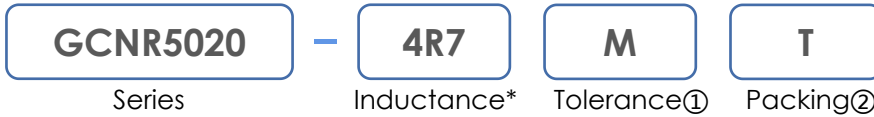
GCNR5020 Series

FEATURES

- Metallization on Ferrite Core Result in Excellent Thermal Shock
- Magnetic Resin Shielded Construction Reduce Buzz Noise to Ultra Low Levels
- Closed Magnetic Circuit Design Reduces Leakage Flux and Excellent for EMI
- Operating Temperature Range: -40°C~+125°C(Including Self- Temperature Rise)
- RoHS Compliant



PART NUMBER CONSTRUCTION

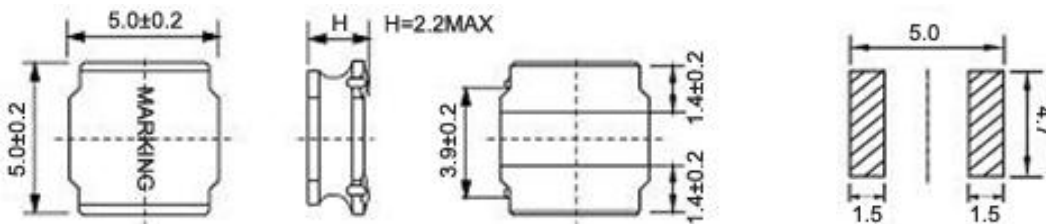


① Tolerance: M = 20% N = 30%
 ② Packing: B = Bulk T = Tape and Reel
 *Refer to Electrical Specification table

ELECTRICAL SPECIFICATIONS

Part Number	Inductance (μH)	DCR(mΩ) ±30%	I _{rms} (A)	I _{sat} (A)	Test Frequency (KHz/V)
GCNR5020-1R0N	1.0	20	4.30	4.33	100KHz/1V
GCNR5020-1R5N	1.5	26	3.20	4.10	100KHz/1V
GCNR5020-2R2M	2.2	38	2.90	3.25	100KHz/1V
GCNR5020-3R3M	3.3	46	2.50	2.55	100KHz/1V
GCNR5020-4R7M	4.7	65	2.20	2.40	100KHz/1V
GCNR5020-6R8M	6.8	92	1.80	2.10	100KHz/1V
GCNR5020-8R2M	8.2	100	1.68	1.90	100KHz/1V
GCNR5020-100M	10	125	1.45	1.50	100KHz/1V
GCNR5020-150M	15	180	1.25	1.44	100KHz/1V
GCNR5020-220M	22	250	1.10	1.18	100KHz/1V
GCNR5020-330M	33	390	0.93	0.97	100KHz/1V
GCNR5020-470M	47	560	0.77	0.81	100KHz/1V

PRODUCT DIMENSIONS(Unit:mm)



RECOMMENDED LANDING PATTERN